

FRONT AND REAR BUMPERS

GENERAL DESCRIPTION

Both front and rear bumpers are of one piece construction. The attachment bars and braces are designed for improved support and increased clearance between bumper and sheet metal.

ADJUSTMENT

Attachment of the bumpers is such that slotted holes in the frame and bumper to frame attachment bars provide fore and aft as well as vertical adjustment. Lateral adjustment is possible by using shims at the frame-to-bumper attachment.

FRONT BUMPERS

A. REMOVAL PONTIAC (Fig. 14-1)

1. Remove valance.

2. Disconnect parking lights.

3. Loosen grille attaching bolts and slide both grille shells toward center (std. car only).

4. Remove two forward frame attaching bolts and loosen two rear bolts.

5. With aid of helper, remove bumper.

6. Remove all face bar-to-frame attaching bars and braces.

7. Remove grille assemblies; three bolts each.

8. Remove emblem and pad.

GRAND PRIX (Fig. 14-2)

1. Remove valance.
2. Disconnect vacuum line at connector.

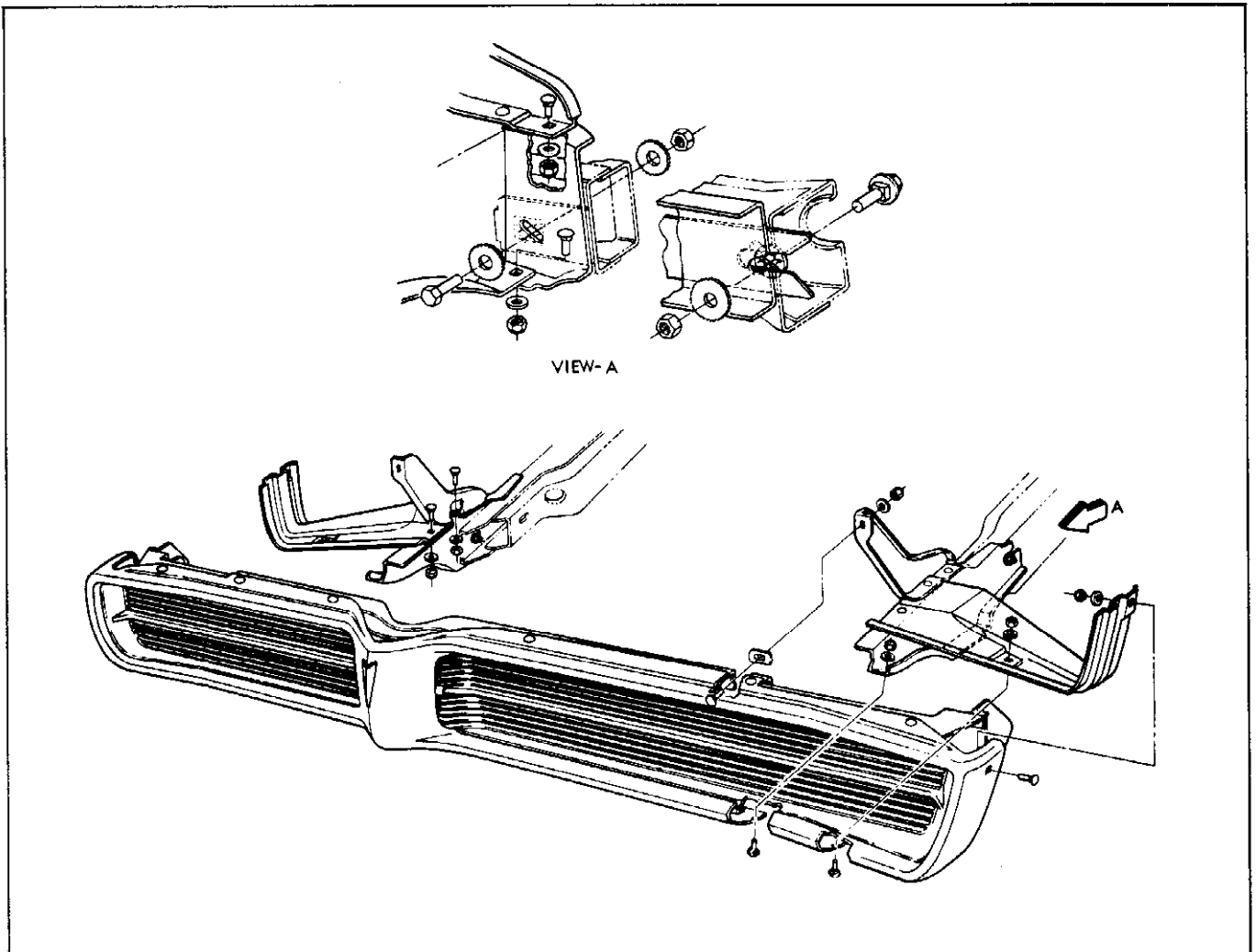


Fig. 14-1 Front Bumper Assembly (Pontiac exc. GP)

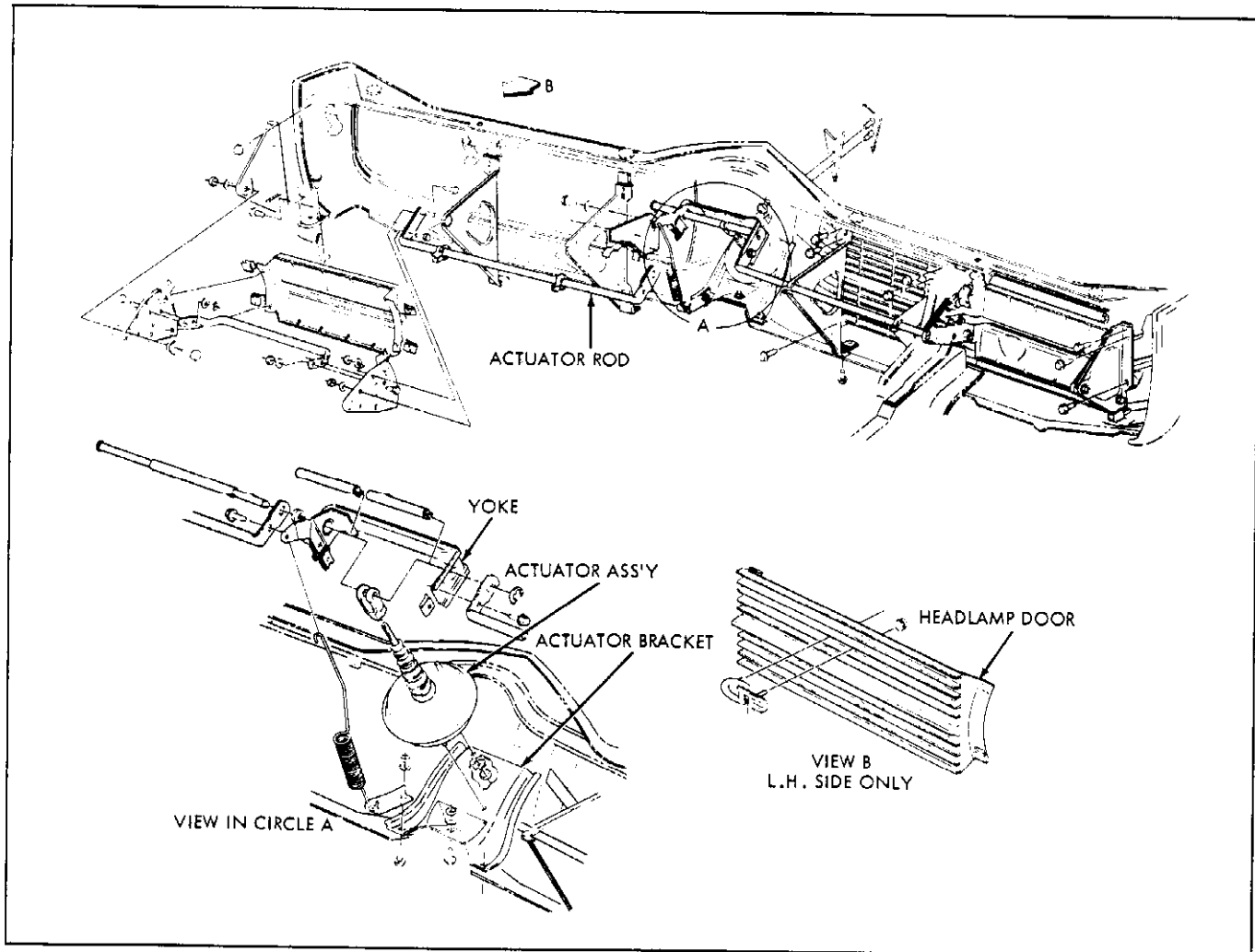


Fig. 14-2 Front Bumper Assembly (GP)

3. Disconnect actuator rod and yoke mechanism from headlight door control rods (Fig. 14-2).

4. Remove two forward frame attaching bolts and loosen two rear bolts.

5. With aid of a helper, remove bumper assembly.

6. Remove all face bar-to-frame attaching bars and braces.

7. Remove headlight door control rods, brackets and headlight doors.

NOTE: The above parts may be removed individually or as an assembly.

8. Remove two grille sections.

9. Remove actuator and actuator attaching bracket.

10. Remove emblem and pad.

TEMPEST (Fig. 14-3)

1. Disconnect and remove parking lamps.

2. Support bumper with blocks and remove four frame attaching bolts.

3. With aid of a helper, remove bumper assembly.

4. Remove all face bar-to-frame attaching bars and braces.

5. Remove reinforcement bar from face bar.

B. REPLACEMENT

1. To install, reverse above procedures making sure the front bumper is properly aligned with the front end sheet metal. Use shims if necessary. The adjusting cam plates (Tempest only) must be properly seated before tightening.

2. Torque all face bar to attachment bar bolts 25 lb. ft. and all attachment bar to frame bolts 50 lb. ft.

REAR BUMPERS (Typical)

All rear bumpers (Figs. 14-4 & 14-5) contain a center opening for access to the gas tank filler located in this opening on all cars except station

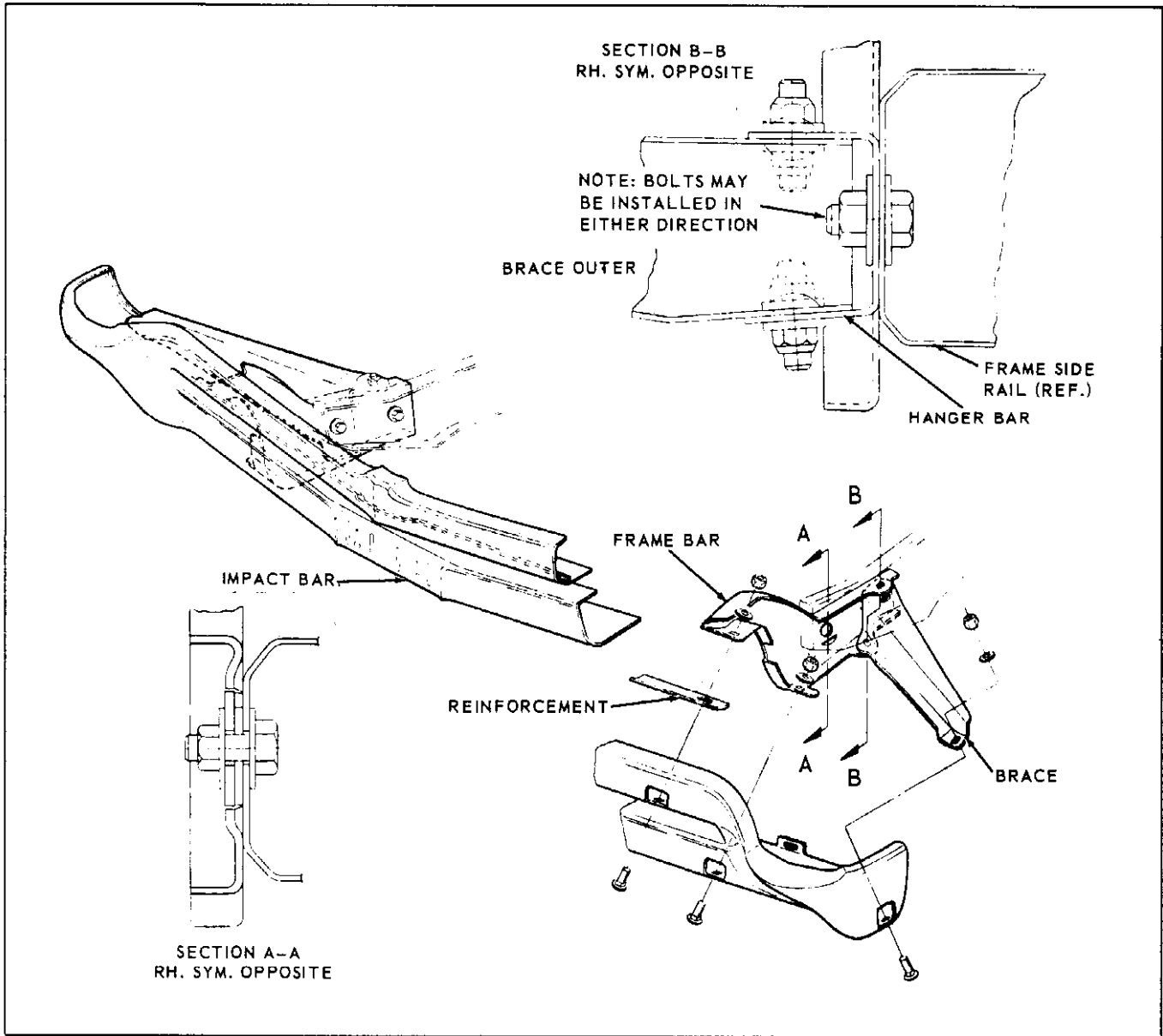


Fig. 14-3 Front Bumper Assembly (Tempest)

wagons. Shims may be required at the center hanger bar bracket where it contacts the back of the face bar to prevent possible rattles.

A. REMOVAL

1. Disconnect back-up lights if applicable and license plate light.
2. Support bumper with blocks; on Pontiac, loosen two forward frame attaching bolts and remove two rear bolts; on Tempest, remove all four bolts.
3. Remove face bar attaching bolts in license plate area.
4. With aid of a helper, remove rear bumper assembly.

5. Remove all face bar-to-frame attaching bars and braces. If necessary, remove back-up lamp shields (Pontiac only).

6. Remove fuel filler door (except station wagon), back-up lights and license plate light.

REPLACEMENT

1. To install, reverse the above procedure making sure rear bumper assembly is properly aligned. The adjusting cam plates (Tempest only) must be correctly seated before tightening bolts.

NOTE: All Pontiacs require back-up lamp shields; if removed during disassembly, they must be reinstalled.

2. Torque all rear bumper face bar to attachment bar and support bar bolts 25 lb. ft., all attaching bar

and support bar to frame bolts 50 lb. ft. and all fuel filler door attaching bolts 6 lb. ft.

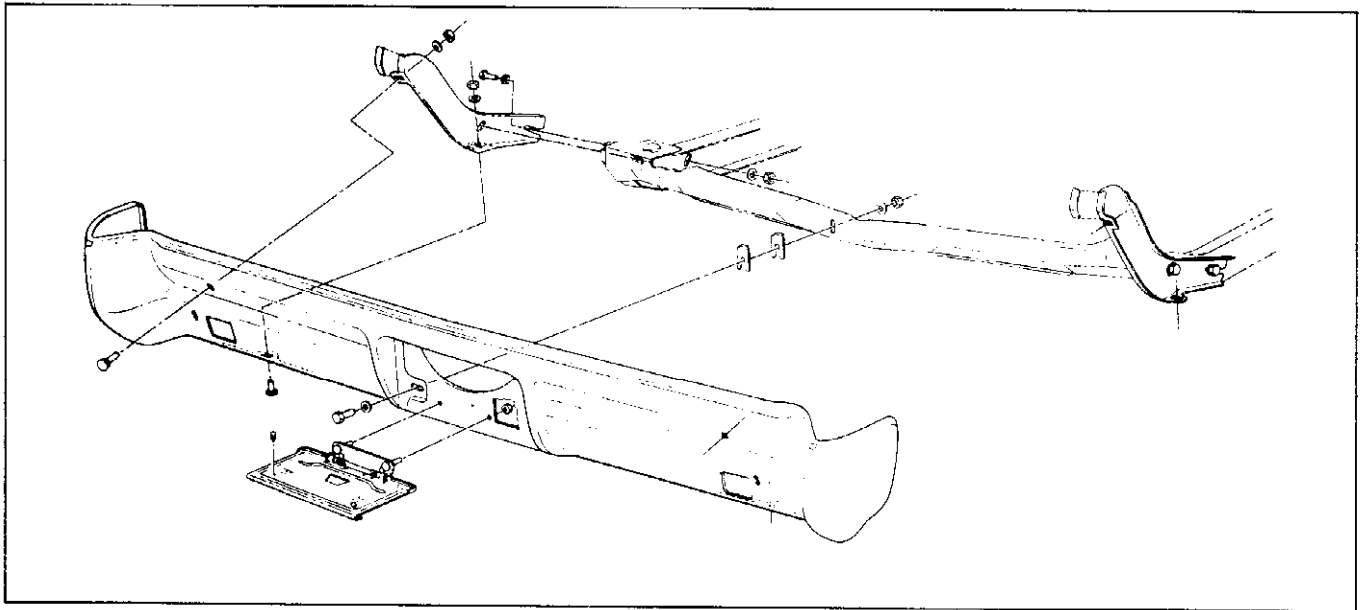


Fig. 14-4 Rear Bumper Assembly (Pontiac)

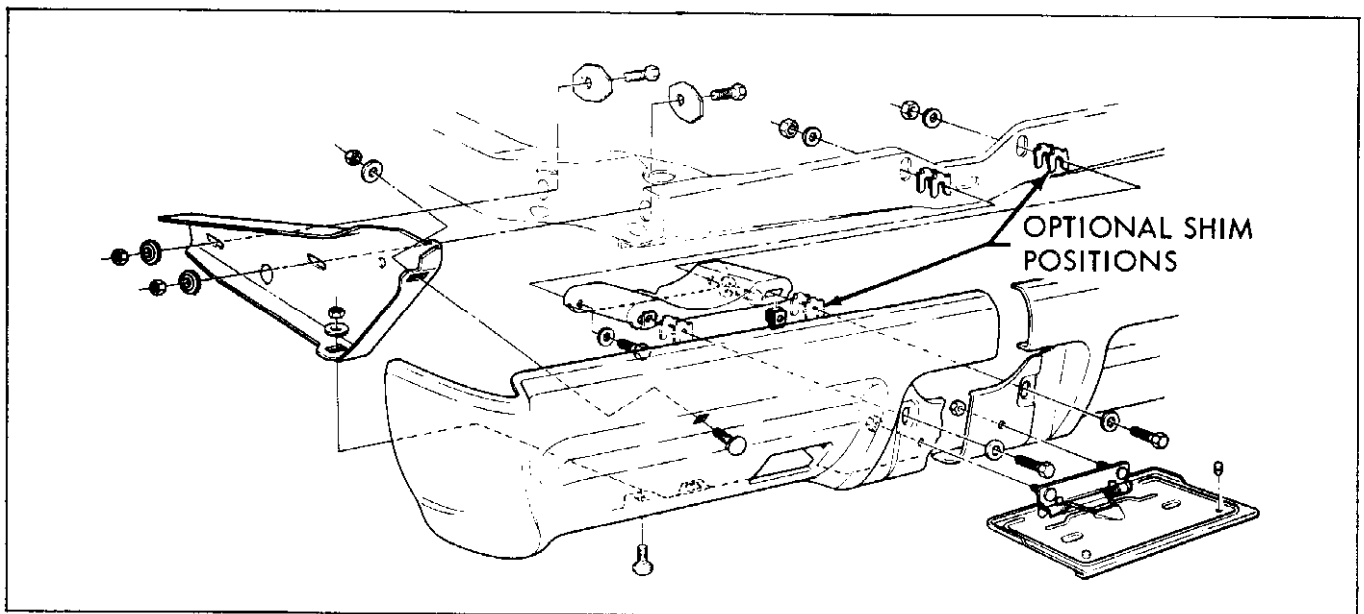


Fig. 14-5 Rear Bumper Assembly (Tempest)